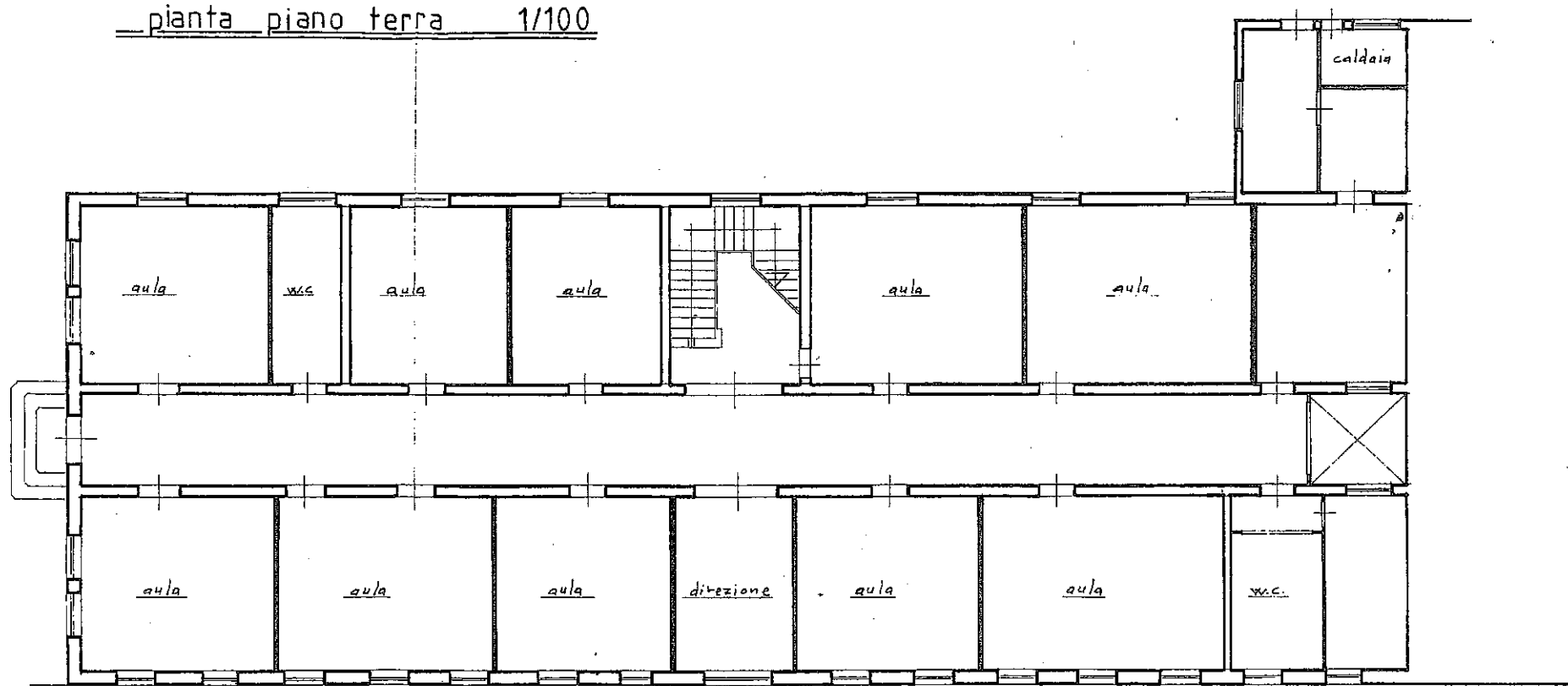


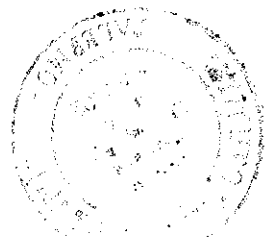
ISTITUTO ANTONIO DI MICHIELLI
Via Filippo Perlatore, 22
90145 PALESTRA
Part. IVA 00706020833

pianta piano terra 1/100



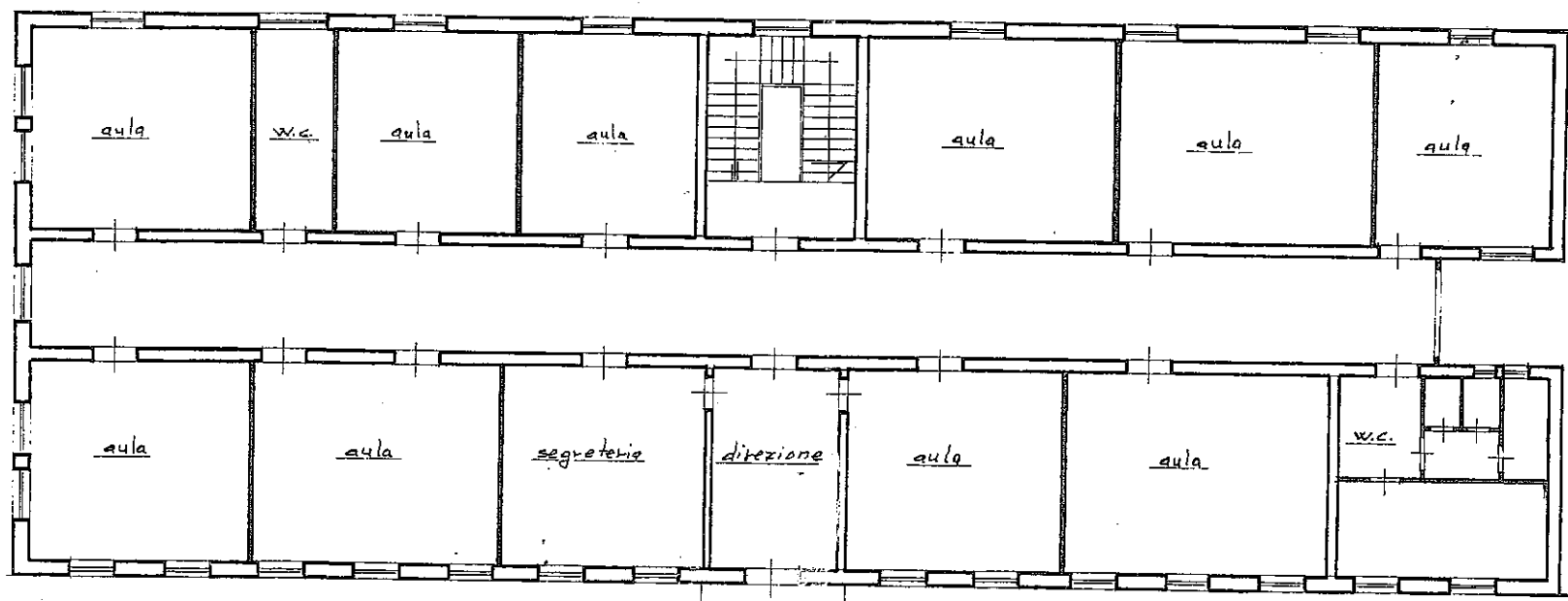
via f. parlatore

PROGETTO ARCHITETTICO
Dott. Ing. FRANCESCO FUSCO
1987
FUSCO



ISTITUTO ANTONIO DI RUSSI s.r.l.
Via Filippo Parlatore, 22
90135 PALERMO
Part. IVA 00700020828

pianta piano primo 1/100



via f. parlatore

